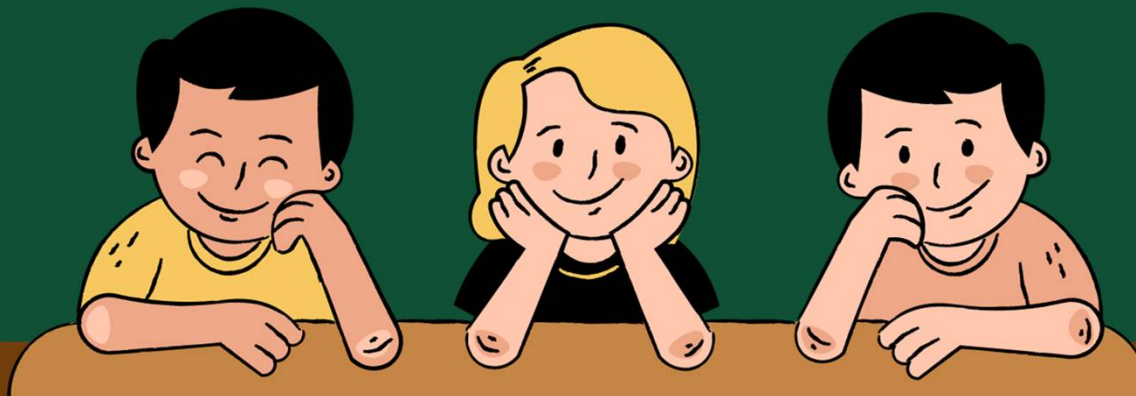


Talk on P6 Matters

17 January 2025



Principal's Segment



PSLE Matters



School Plans



Full Subject Based



How we can work
together

Banding in Sec Schools



Posting to Sec Sch

Followed by



DSA & 2024 PSLE Results

Curriculum Sharing



PSLE Matters

AL Scores

AL	Raw Mark Range
1	≥ 90
2	85-89
3	80-84
4	75-79
5	65-74
6	45-64
7	20-44
8	< 20

The scores can also be found in the Shuqunite Diary on page 33

Scoring for Foundation Subjects

- ❑ If your child is taking Foundation subject, that subject will be graded A to C
 - mapped to Standard level subject to derive a student's overall PSLE score (see below)
 - is based on the learning and assessment load of the subjects and informs students of their readiness at secondary level

Grades for Foundation Subjects	Foundation Raw Mark Range	Equivalent Standard Level AL
A	75-100	6
B	30-74	7
C	<30	8

Exemption from Mother Tongue Language

Students who are exempted from Mother Tongue will receive an AL score between 6 -8 as their Mother Tongue Language

The score is decided by MOE, depending on how well the student has done in English, Math and Science.



Full Subject- Based Banding (FSBB) in Sec School

Full Subject-Based Banding

- **Full Subject-Based Banding (Full SBB) is part of MOE's ongoing efforts to nurture the joy of learning and develop multiple pathways to cater to the different strengths and interests of our students.**
- **We now have a secondary school education where students learn each subject at the level that best caters to their overall strengths, interests and learning needs**
- **There are no longer be separate Express, N(A), and N(T) courses, since 2024, and students will be in mixed form classes where they can interact with peers of different strengths and interests.**

With Full Subject-Based Banding:

At the start of Secondary One, all students can offer English Language, Mother Tongue Languages, Mathematics and Science at a more demanding level based on their PSLE Achievement Level (AL) for each subject. Beyond the start of Secondary One, students may also offer these subjects at a more demanding level based on their performance in secondary school.

With Full Subject-Based Banding:

PSLE Score	Posting Groups	Indicative level for most subjects at start of Secondary 1
4 – 20	PG3	G3
21 and 22	PG2 or PG3	G2 or G3
23 and 24	PG2	G2
25	PG1 or PG2	G1 or G2
26 – 30 (with AL 7 in EL and MA)	PG1	G1

Offering subjects at a more demanding level

Students will also be able to offer Humanities subjects (Geography, History, and Literature in English) at a more demanding level from Secondary Two. The criteria for taking Humanities at a more demanding level will be based on students' aptitude for and interest in these subjects at Secondary One.

Offering subjects at a more demanding level

Indicative Level of Most Subjects at Start of S1	PSLE Grade (Standard MTL)	PSLE Grade (Foundation Mother Tongue Language)	Option to offer MTL at
G3	AL 6	ALA	G2
	AL 7-8	AL B-C	G1 or G2
G2	AL 7-8	AL B-C	G1

Offering subjects at a more demanding level

Eligibility criteria			
Humanities subject level at S1	Humanities subjects	School-based assessment	Option to offer Humanities at a more demanding level from S2:
G2	<ul style="list-style-type: none"> ● Geography ● History ● Literature in English 	Aptitude and interest for specific subject	G3 Geography, History and/or Literature in English (i.e., can offer one or more Humanities subjects at a more demanding level)
G1	<ul style="list-style-type: none"> ● Humanities <ul style="list-style-type: none"> ● Social Studies component ● Humanities Exposure Modules (HEMs) in Geography, History and Literature in English 	Aptitude in English Language and G1 Humanities	G2 Geography, History and/or Literature in English (i.e., can offer one or more Humanities subjects at a more demanding level)

Offering subjects at a less demanding level

For students who offered English, Mathematics and/or Science at Foundation level at PSLE, but are otherwise eligible to take most of their subjects at G3 when entering secondary school, they may choose to take these subjects at a less demanding level (i.e., G2), in consultation with their secondary schools. Students who face exceptional difficulties coping with their Mother Tongue Languages (MTL) will have the option to offer G1 or G2 MTL. At the start of Secondary One, students can offer MTL at a less demanding level based on the following criteria:

Common Curriculum subjects

In their mixed form classes, students will spend around one-third of their curriculum time taking a set of six common curriculum subjects:

Examinable

Art

Design &
Technology

Food &
Consumer
Education

Non-examinable

Music

Physical
Education

Character and
Citizenship
Education

These subjects give students more opportunities to interact and learn with classmates of different strengths and interests.

Subjects Offered at G1, G2 and G3

English Language, Mother Tongue Languages, Mathematics, Science, and Humanities subjects will be offered at G1, G2 and G3.

Students will be grouped in different classes based on their achievement level for each subject.

The following curriculum policy changes will also be implemented from the 2024 Secondary One cohort:

Subjects Offered at G1, G2 and G3

**Mother
Tongue
Languages
(MTL) –
replacement
of MTL 'B'
with G1 or
G2 MTL**

Students who face exceptional difficulties coping with learning MTL will have the option to offer G1 or G2 MTL. With the greater flexibility afforded by the MTL offerings at G1, G2, and G3, MTL 'B' will be discontinued in secondary schools starting from the Secondary 1 cohort in 2024.

Subjects Offered at G1, G2 and G3

Social Studies Normal (Technical) [SS(NT)] – replacement of SS(NT) with G1 Humanities

Students will be able to offer G1 Humanities as a non-examinable subject at the lower secondary levels, in lieu of the current SS(NT).

At lower secondary, G1 Humanities will comprise Social Studies and Humanities Exposure Modules (HEM) in Geography, History, and Literature in English to give students the opportunity to gain exposure to the different Humanities disciplines.

Students offering G2 and G3 Humanities at lower secondary will continue with the existing offerings of Geography, History and Literature in English.

Subjects Offered at G1, G2 an G3

Computer Applications (CPA) – discontinued with teaching of digital competencies incorporated into other subjects and programmes

Lower secondary CPA, which is currently only available for students taking the N(T) stream, will be discontinued. Teaching of digital competencies will be incorporated into other subjects/programmes for all lower secondary students.

More information

On:

- **Upper Secondary School Subjects**
- **Elective subjects**
- **National Examinations**
- **Post secondary admission**

can be found in the following link:

<https://www.moe.gov.sg/microsites/psle-fsbb/full-subject-based-banding/secondary-school-experience.html>



Sec 1 Posting

Posting to Secondary School

With the new PSLE scoring system, more students will have the same PSLE Score, and schools will be less differentiated based on cut-off points.

Choice order will be introduced as a tie-breaker to recognise the different considerations that families have in making school choices.

S1 Posting Tie-Breakers (in order of priority)

- 1.Citizenship (priority given to Singapore Citizens, followed by Permanent Residents and International Students)**
- 2.Choice order of schools [NEW]**
- 3.Computerised balloting**

Posting to Secondary School

Posting to secondary school will still be based on your child's PSLE Score. Your child can submit up to 6 different school choices, in order of preference.

Tie-breakers are used only if there are two or more students with the same PSLE Score vying for the last available place(s) in a school.

Posting to Secondary School

Tie-breakers in the new S1 Posting System

Tie-breakers are used only if there are two or more students with the same PSLE score vying for the last available place(s) in a school. Here's a simplified example.

5 students are vying for the last places in the schools of their choice.

Jane
Singapore Citizen
16 pts

SCHOOL CHOICES:
1) Sch A
2) Sch ...
3) Sch ...
4) Sch ...



Bryan
Singapore Citizen
20 pts

SCHOOL CHOICES:
1) Sch B
2) Sch ...
3) Sch ...
4) Sch ...



Mary
Singapore Citizen
20 pts

SCHOOL CHOICES:
1) Sch A
2) Sch B
3) Sch C
4) Sch ...



Alan
Permanent Resident
20 pts

SCHOOL CHOICES:
1) Sch A
2) Sch B
3) Sch D
4) Sch ...



Rina
Permanent Resident
20 pts

SCHOOL CHOICES:
1) Sch A
2) Sch B
3) Sch D
4) Sch E



Students with better scores will be posted first

Jane has a better PSLE score. She will be posted first, to **School A**.



Bryan, Mary, Alan and Rina have the same score.

As Jane has taken the last available place in School A, Bryan, Mary, Alan and Rina will vie for the last available place in their next choice, **School B**.

Tie-breaker #1: Citizenship

Bryan and Mary are Singapore Citizens. They will have priority to enter **School B**.



Alan and Rina will be tie-broken out as they are Permanent Residents. They will be considered for their next choice, **School D**.

Tie-breaker #2: Choice order of schools

Because Bryan ranked School B higher than Mary, he will be posted to **School B**.



Since Bryan has taken the last place in School B, Mary will be posted to **School C**.



Alan and Rina have both ranked School D as their third choice. They will go through computerised balloting to vie for the last remaining place in **School D**.

Tie-breaker #3: Computerised balloting

Through computerised balloting, Alan is posted to **School D**.



Since Alan has taken the last place in School D, Rina will be posted to her fourth choice, **School E**.



Posting to Secondary School

As with the previous T-score system, if your child takes HCL in primary school, there will be a posting advantage for admissions to SAP schools.

Should he / she score very well (AL 1/ AL2) for MTL and very well too for the other subjects, your child may still be offered HMTL in Secondary school even if he/she did not offer HMTL in primary school.

SECONDARY 1 POSTING



EXAMPLE : Using HCL for Admission into SAP Schools



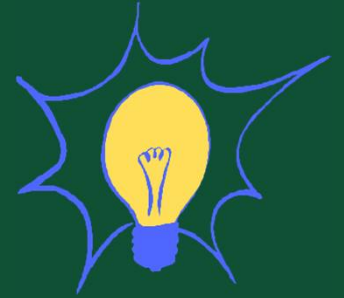
1st		7	NO HCL	Students with better PSLE Score will be posted first, even if they did not take HCL.
2nd		8	DISTINCTION	
3rd		8	MERIT	Amongst students with the same PSLE Score, those with better HCL grades will be posted into a SAP school first.
4th		8	PASS	
5th		8	NO HCL	
6th		9	DISTINCTION	

RESTRICTED/ NON-SENSITIVE

Updated on 4 Feb 2021



SAP Schools



Anglican High School

Chung Cheng High School (Main)

Nan Hua High School

Nanyang Girls' High School

Catholic High School

CHIJ (St Nicholas Girls' School)

Maris Stella High School

Dunman High School

Hwa Chong Institution

River Valley High School

Nan Chiau High School

What to expect for Sec 1 Posting

BEFORE OCT

● Explore schools

Learn about the considerations when choosing a school at our PSLE-FSBB Microsite.



[https://go.gov.sg/
choosing-sec-schools](https://go.gov.sg/choosing-sec-schools)

What to expect for Sec 1 Posting

END-NOV

Receive PSLE results and submit school choices

Your child can submit up to 6 different school choices, in order of preference.

Things to Consider when Selecting a Secondary School

- Distance from home
- Offering of Mother Tongue languages
- Official Address registered is crucial (In case of Manual Posting)
- Students with outstanding results will be invited to apply for Edusave Entrance Scholarships for Independent Schools and SAP Schools

Exercising Option for Secondary School posting

Ensure that you are available around PSLE results release period

If necessary, officially assign someone to make the options

N.B. You must register your child for secondary school if he/she is eligible to avoid manual posting.

What to expect for Sec 1 Posting

END-DEC

Receive school posting results

The posting results will be released via MOE's S1-Internet System, SMS and through your child's primary school.



Direct School Admission

Direct School Admission

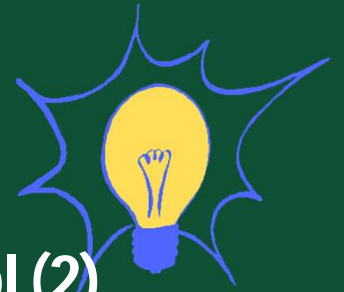
Direct School Admission for secondary schools (DSA-Sec) allows students to apply to some schools before taking the PSLE.

Students apply based on their talent in sports, CCAs and specific academic areas.

23 of 27 accepted the offers



DSA Schools



**Commonwealth Secondary School
(2)**

Dunearn Secondary School (1)

**Fairfield Methodist School
(Secondary) (1)**

Fuhua Secondary School (2)

**Geylang Methodist School
(Secondary) (1)**

Hua Yi Secondary School (5)

Jurong Secondary School (2)

Jurong West Secondary School (1)

Nan Hua High School (1)

Nanyang Girls' High School (1)

Raffles Girls' School (Secondary) (1)

School of Science and Technology (3)

St. Margaret's School (Secondary) (1)

Westwood Secondary School (1)

Who can apply

P6 students can apply for DSA-Sec based on a wide-range of talents, including:

- **Sports and games**
- **Visual, literary and performing arts**
- **Debate and public speaking**
- **Science, mathematics and engineering**
- **Languages and humanities**
- **Uniformed groups**
- **Leadership**

Updates

Review of DSA scheme among MOE's priorities for 2025: Chan Chun Sing



We will also share more for those with DSA potential in Term 2.

Look out for updates on this link: <https://www.moe.gov.sg/secondary/dsa>



2024 PSLE Performance

PSLE Outcomes

Number of Candidates	233
Eligible for Secondary School	99.6%
Eligible for G3 Posting	63.1%
Eligible for G2 Posting	23.6%
Eligible for G1 Posting	12.9%



Our Plans and Strategies

2025 PSLE EXAMINATION CALENDAR (TBC)

Registration	Tuesday 2 April – Thursday 18 April
Oral Examinations	Wednesday 13 August & Thursday 14 August
Listening Comprehension	Tuesday 16 September
Written Examinations	Thursday 25 September – Tuesday 30 September/ Wednesday 1 October (HMT)

Our Plans & Strategies

- **Extended curriculum time – supplementary classes on every Wed & Thu**
- **Supplementary classes during holidays:**
 - **2- 5 June and**
 - **10 – 12 September. All sessions are held in the morning.**
- **Practice Papers from various schools and past year papers as well as PSLE booklets**
- **Pull out parallel lessons for students who need focussed coaching**
- **Timed Practice for all**

Our Plans & Strategies

- **Subject specific enrichment lessons**
- **Participation in National/external competitions**
- **Leadership Opportunities and Training**
- **Target setting with the students**
- **Parent-Teacher conferences to address concerns for under-performing students or students with difficulties**
- **Monitoring and expecting every student to participate actively in lessons**
- **CCA provides them the break they need from their studies**
- **Work with us to manage your child's after-school activities**



**The Road
Ahead: How we
can work
together**

Be our ICARE Parent!



ICARE :

- **Involved** – in your child's life but allow him/her to learn from his/her mistakes
- **Concerned** – about his/her progress and his/her online activity
- **Aware** – that your child is growing and that you need to adapt to his/her development
- A **Role Model** by reading alongside your child
- **Encouraging** and celebrating your child's successes



Parents want well-read kids, but are they themselves reading?

<https://www.straitstimes.com/opinion/parents-want-well-read-kids-but-are-they-themselves-reading>



Parenting a teenager



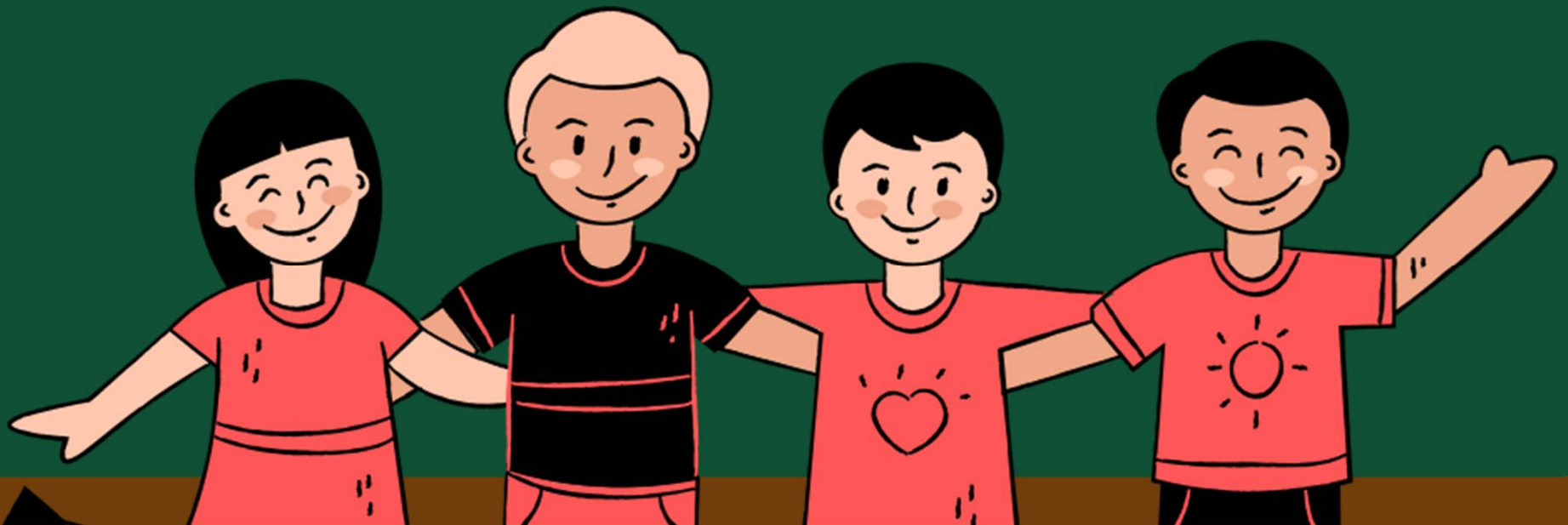
*Your success as a parent
is not determined by
whether your kids get
into elite schools or
prestigious professions.
The real test of parenting
is not what children
achieve, but who they
become and how they
treat others.*

We look forward to partnering you to nurture the stars within your children!



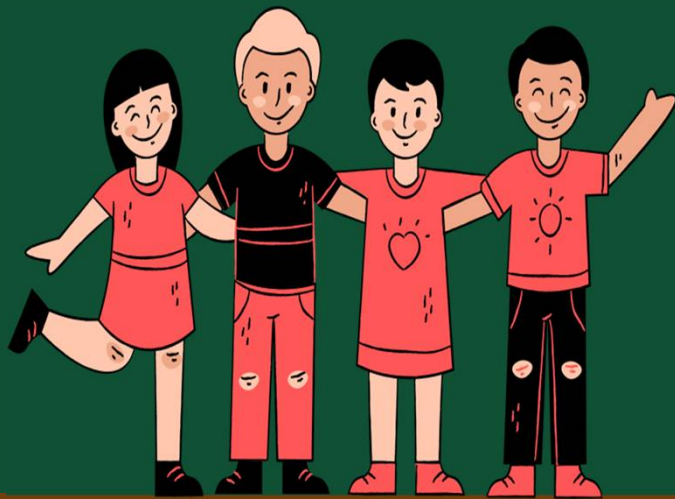
Curriculum Sharing by Subject Heads

Q&A





Please adjourn
to:
CL - Hall
ML - G2-01
TL - G1-01



*Wishing You A Happy &
Prosperous New Year*

