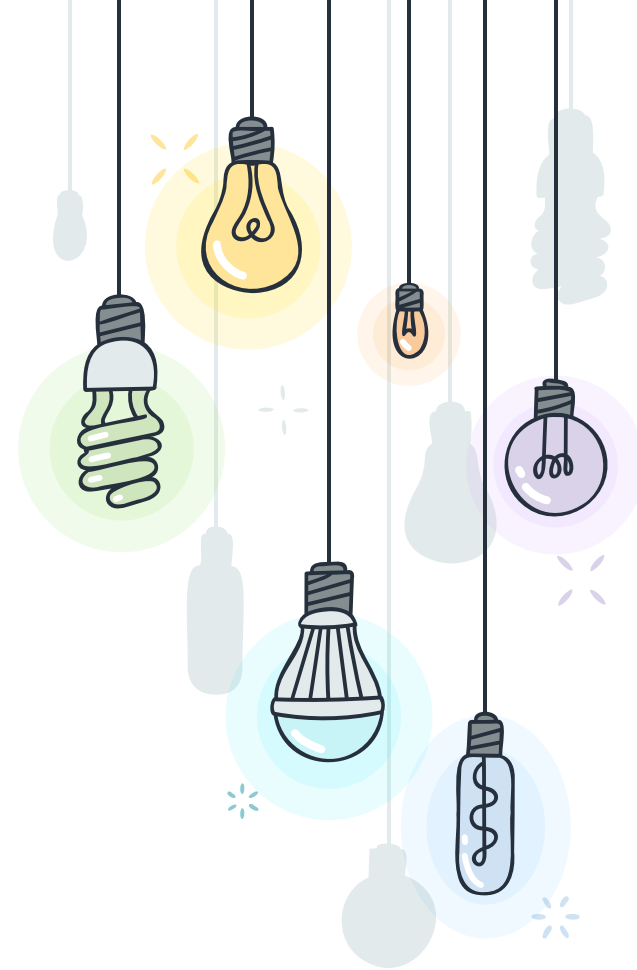


TALK ON SUBJECT-BASED BANDING
& SCHOOL MATTERS
2 FEB 2024



* AGENDA

- + What's New for P4 Students
- + Implications for P5 & P6
- + Implications for Secondary School
- + Our 2023 PSLE Results
- + How we can work together
- + Q&A



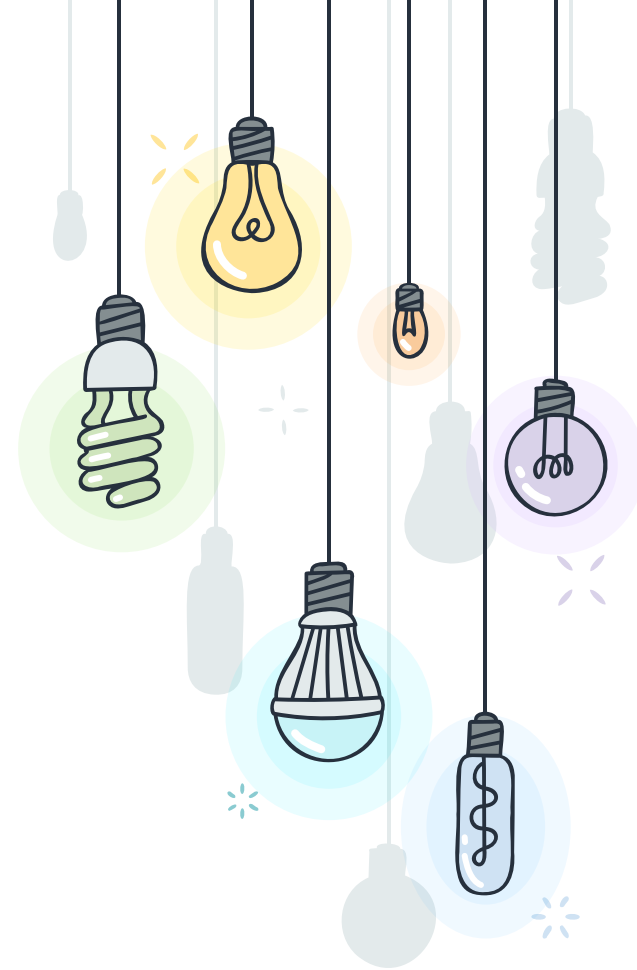
1

SUBJECT-BASED BANDING

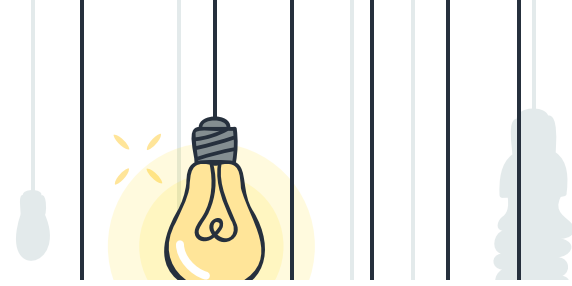


* SUBJECT-BASED BANDING

- + **To provide more flexibility to students with strengths and abilities that vary across subjects.**
- + **Every child will be encouraged to do the subjects at the levels that best meet his abilities.**



* SQPS SUBJECT COMBINATIONS



We offer 6 subject combinations that meet the needs of our students :

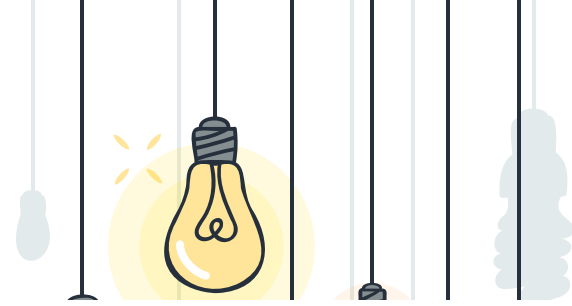
- + 4S1H: 4 Standard subjects + 1 Higher Mother Tongue Language**
- + 4S: 4 Standard subjects**
- + 3S1FMA: 3 Standard subjects + 1 Foundation Mathematics**
- + 3S1FMTL: 3 Standard subjects + 1 Foundation Mother Tongue Language**
- + 2S2F: 2 Standard Subjects (EL&MT) + 2 Foundation Subjects (FMA&FSC)**
- + 4F: 4 Foundation Subjects**

2

IMPLICATIONS FOR P5 & P6



* OFFERING HMTL



- **The school would offer 4S1H if we have found the student suitable for this course.
*(85 marks and above for CL, TL or ML and at least 80 marks for the other subjects)***
- **Student taking 4S1H must ensure that he/she is able to meet the demands of a rigorous Pri 5 and P6 curriculum.**
- **Students are expected to sit for the HMTL paper in PSLE.**



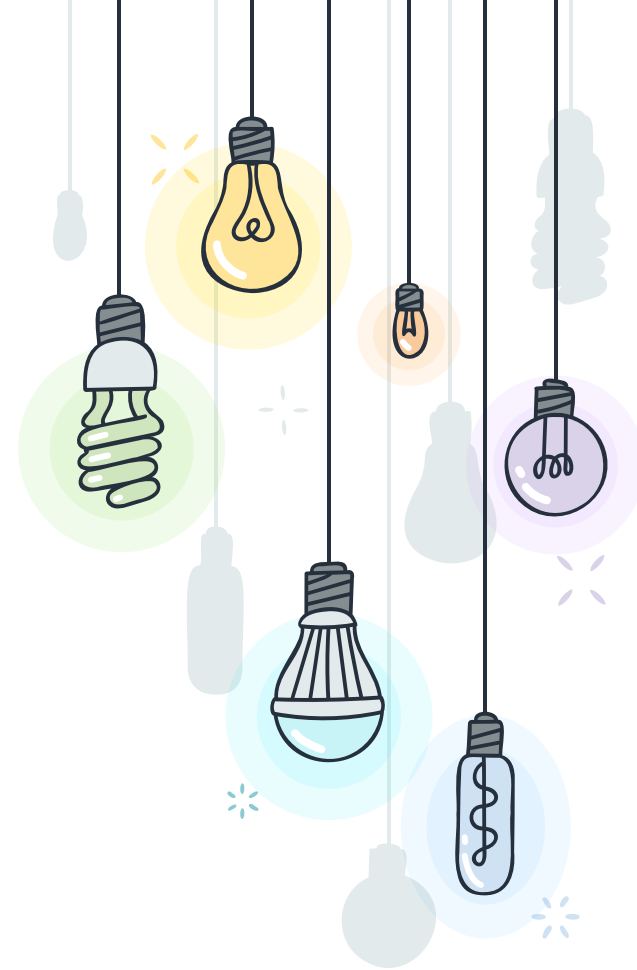
* NOTE REGARDING OFFERING HMTL

- + **Although HCL results do not count towards the PSLE Score, if students with the same PSLE Score are vying for limited places in the same SAP school, those with better HCL grades will be allocated a place ahead of other students. This applies before the tie-breakers for S1 posting.**
- + **But students do not have to offer HCL at PSLE to qualify for a SAP school.**

Only for application to SAP schools

* LIST OF SAP SECONDARY SCHOOLS

- + **Anglican High School Chung Cheng High School (Main)**
- + **Nan Hua High School**
- + **Nanyang Girls' High School**
- + **Catholic High School**
- + **CHIJ (St Nicholas Girls' School)**
- + **Maris Stella High School**
- + **Dunman High School**
- + **Hwa Chong Institution**
- + **River Valley High School**
- + **Nan Chiau High School**



MOVEMENT AFTER P5

*At the end of P5, if child scores Band 1 in his foundation subjects, he can opt to do the subject at standard level. However, he may have to repeat the level at P5 so as to catch up with the rest of the subjects.

Pupil takes a subject combination determined by the school

End of P5

Pupils who do very well *

Pupils who do not meet expectations

All other pupils

upgrade or continue with the same subject combination

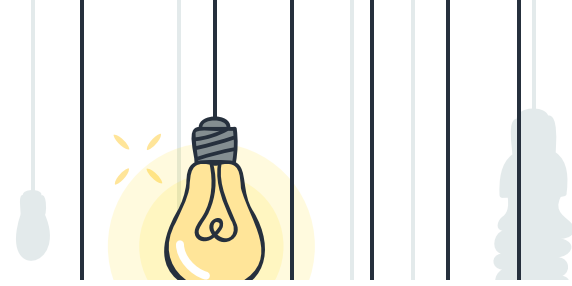
switch some subjects to foundation level

continue with the same subject combination

Primary School Leaving Examination (PSLE)

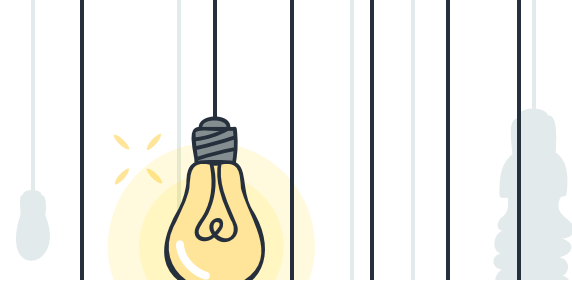
End of P6

SUBJECT-BASED BANDING (PRI) AND * SECONDARY SCHOOL ADMISSION:



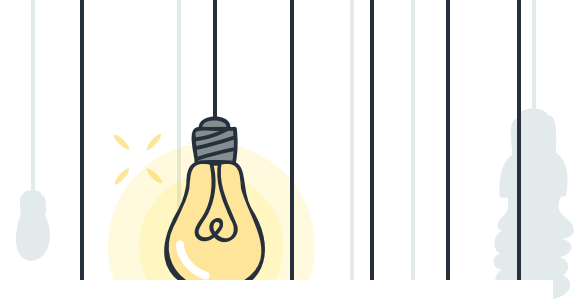
- **Progression to secondary level depends on your child's PSLE score. The different expectations of standard and foundation subjects will be taken into account when your child's PSLE score is tabulated. If he/she excels in his/her subjects, he/she will have the opportunity to pursue higher-level options at secondary school.**
- **Offering subjects at the foundation level is not a disadvantage to your child. It enables him/her to focus on building up strong fundamentals in these subjects and better prepares him/her for progression to secondary school.**

* PSLE SCORE



- + **Each subject will be scored using 8 bands known as Achievement Levels (AL), with AL1 being the best score and AL8 being the lowest score. The ALs reflect the student's level of achievement in the subject.**
- + **The student's PSLE Score will be the sum of the four subject scores.**

* FROM BANDS TO ALS: STANDARD



From T-score to wider scoring bands

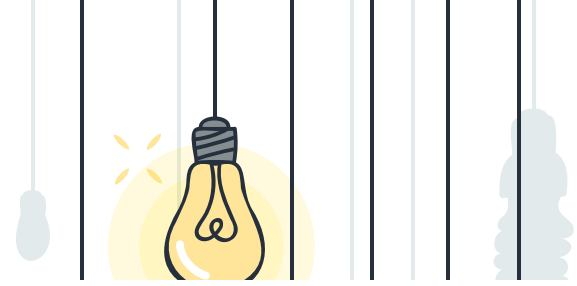
REFLECTS A STUDENT'S INDIVIDUAL LEVEL OF ACHIEVEMENT

- Unlike the current T-score, students' AL for each subject will reflect their level of achievement, rather than how they have performed relative to their peers.

AL	1	2	3	4	5	6	7	8
Raw Mark Range	≥ 90	85-89	80-84	75-79	65-74	45-64	20-44	< 20

+ **The scores can also be found in the Shuqunite Diary on page 33**

* FROM BANDS TO ALS: FOUNDATION



From T-score to wider scoring bands

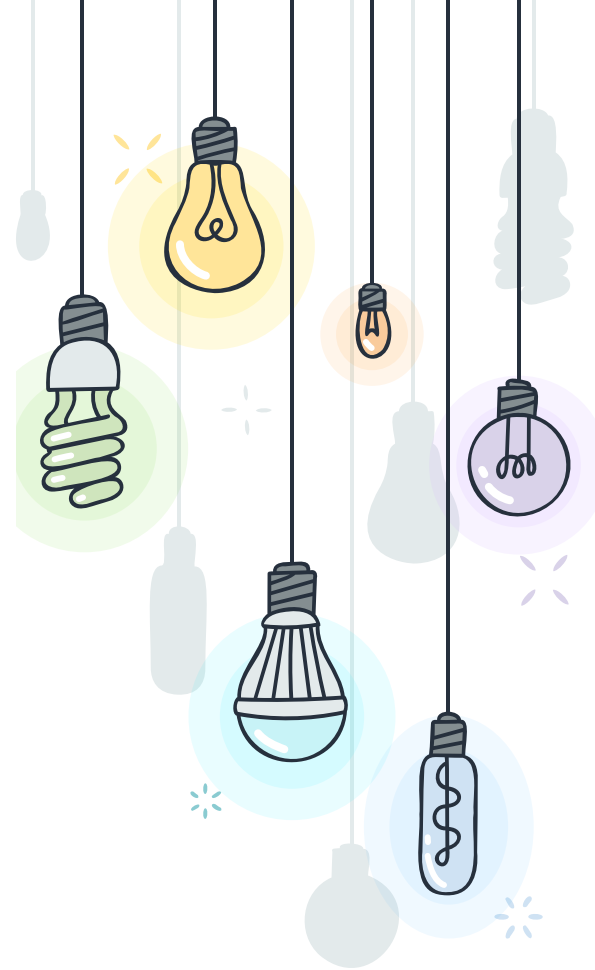
REFLECTS A STUDENT'S INDIVIDUAL LEVEL OF ACHIEVEMENT

Foundation Level AL Reflected on Result Slip	Foundation Raw Mark Range	Equivalent Standard Subject AL	Standard Raw Mark Range
A	75 – 100	6	45-64
B	30 – 74	7	20-44
C	< 30	8	<20

+ The scores can also be found in the Shuqunite Diary on page 33

* STUDENTS EXEMPTED FROM MOTHER TONGUE

- + **Students who are exempted from Mother Tongue will receive an AL score between 6 -8 as their Mother Tongue score**
- + **The score is decided by MOE, depending on how well the student has done in English, Math and Science**

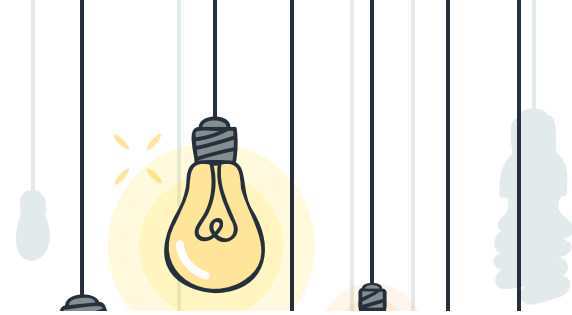


3

IMPLICATIONS FOR SECONDARY SCHOOL

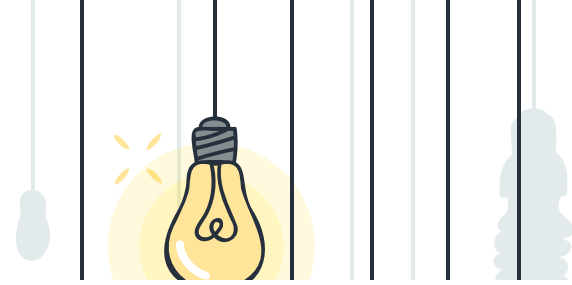


HOW TO MAKE SENSE OF THE PSLE SCORES FOR SEC 1 POSTING



PSLE Score	Posting Groups	Indicative level for most subjects at start of Secondary 1
4 - 20	PG3	G3
21 and 22	PG2 or PG3	G2 or G3
23 and 24	PG2	G2
25	PG1 or PG2	G1 or G2
26 - 30 (with AL 7 in EL and MA)	PG1	G1

OFFERING SUBJECTS AT A MORE DEMANDING LEVEL



Eligibility criteria to offer English Language, Mother Tongue Languages, Mathematics and/or Science at a more demanding level

Indicative Level of Most Subjects at Start of S1	PSLE Standard grade	PSLE Foundation grade	Option to offer subject at
G2	AL 5 or better	-	G3
G1	AL 5 or better	-	G2 / G3
	AL 6	ALA	G2

- ✦ **Beyond the start of Secondary One, students may also offer these subjects at a more demanding level based on their performance in secondary school.**

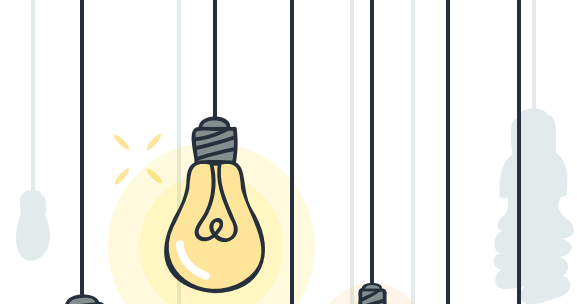
4

OUR 2023 PSLE RESULTS





SECONDARY SCHOOL ELIGIBILITY



Number of Candidates	235
Eligible for Secondary School	99.1%
Eligible for G3 Posting	70.7%
Eligible for G2 Posting	19.2%
Eligible for G1 Posting	9.4%

DIRECT SCHOOL ADMISSION :

32/39 ARE SUCCESSFUL



- + Chua Chu Kang Secondary School (1)
- + Commonwealth Secondary School (2)
- + Gan Eng Seng School (1)
- + Fuhua Secondary School (1)
- + Hua Yi Secondary School (3)
- + Jurong Secondary School (2)
- + Jurongville Secondary School (3)
- + Nan Hua High School (2)
- + Nanyang Girls' High School (1)
- + Outram Secondary School (1)
- + River Valley High School (4)
- + School of Science and Technology (6)
- + School of the Arts (1)
- + Swiss Cottage Secondary School (1)
- + Westwood Secondary School (2)
- + Yuan Ching Secondary School (1)

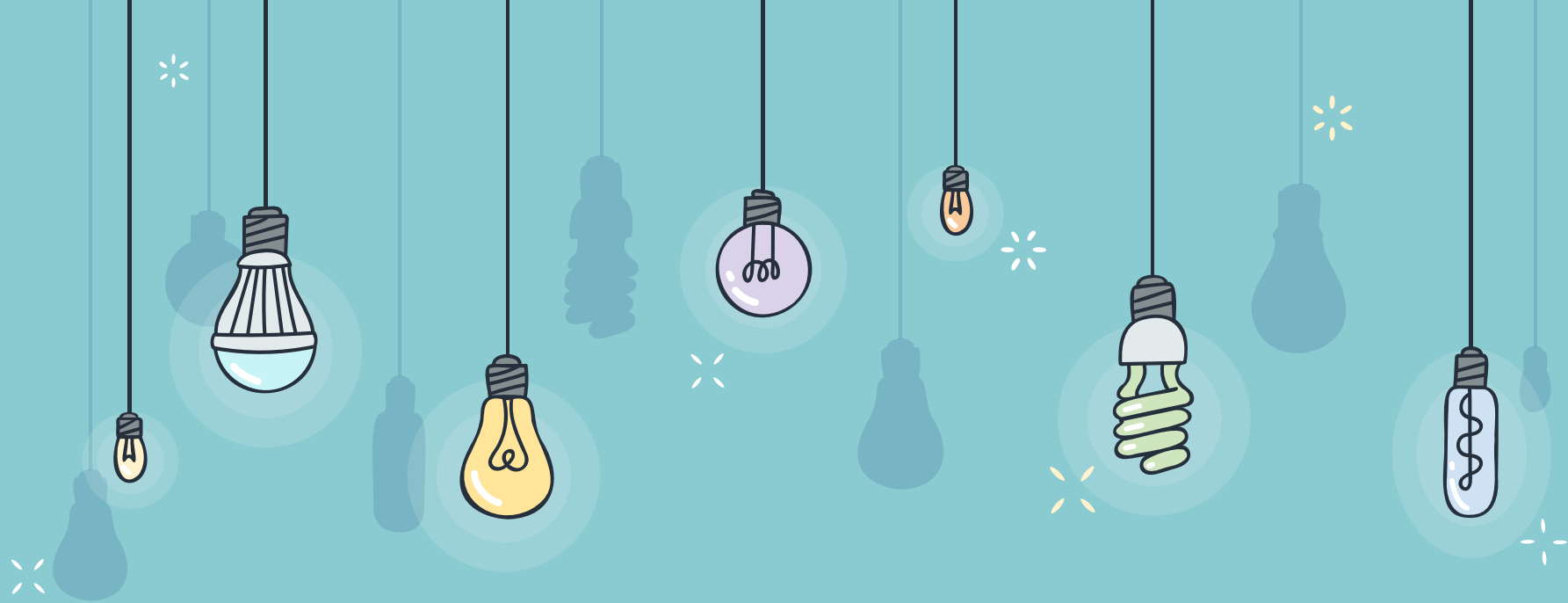


To qualify for schools of choice, working with school and providing your child with love and the appropriate support are important. Tips were shared with you during the Open Classroom session on 23 Jan.

5

HOW WE CAN WORK TOGETHER





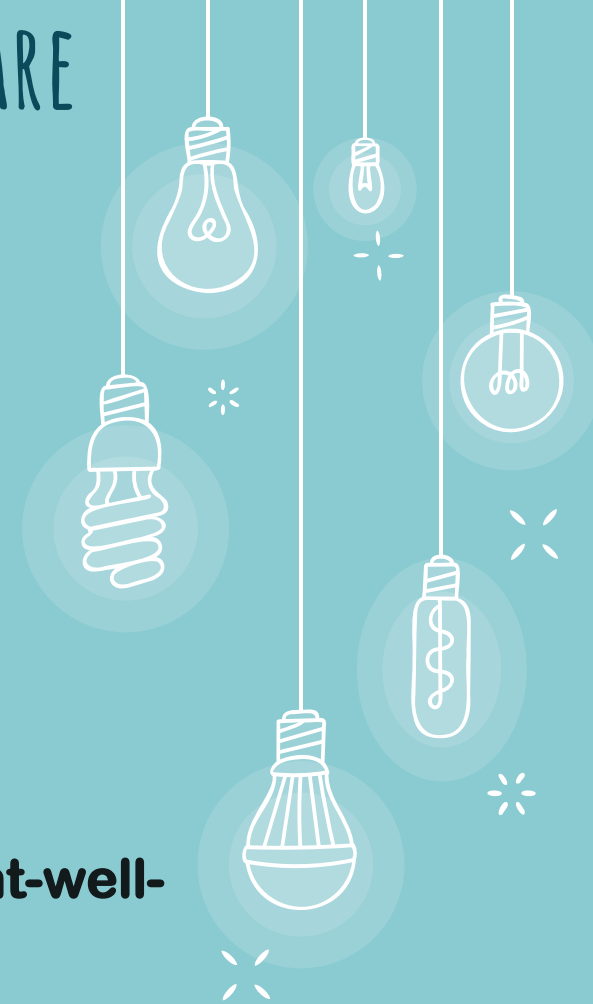
BE OUR ICARE PARENT!

* ICARE : BE

- **Involved** – in your child’s life but allow him/her to learn from his/her mistakes
- **Concerned** – about his/her progress and his/her online activity
- **Aware** – that your child is growing and that you need to adapt to his/her development
- a **Role Model** by reading alongside your child
- **Encouraging** and celebrating your child’s successes



PARENTS WANT WELL-READ KIDS, BUT ARE THEY THEMSELVES READING?



<https://www.straitstimes.com/opinion/parents-want-well-read-kids-but-are-they-themselves-reading>



“At the end of the day, the most overwhelming key to a child's success is the positive involvement of parents.”
- Jane D. Hull

We look forward to partnering you to nurture the stars within your children!



6

QUESTION & ANSWER

